

BELLMONT

CABINET CO.

1300





1300

ON TIME,
ON TREND,
ON BUDGET

Designed to fit your home and your budget, 1300 Series combines efficiency and value without compromising beauty, space, or quality.

1300

IT'S SIMPLY FRAMELESS

As easy as 1-2-3!

1300 Series simplifies the ordering experience using efficiency, fashion, & innovation. So your project is completed faster, on-trend, & under budget.



OVERVIEW

On-Trend Door Styles

Ships 50% Faster

Bellmont Cabinet Co.
Factory, Shipping, &
Customer Service

Sourced & Assembled by
Bellmont Using Domestic
& European Products

DETAILS

5/8" Solid Case Construction
No nail rails.

White Melamine
Exterior & Interior

Completely Banded Case
No exposed particleboard.

1/2" Applied End Panels*
*Required for exposed ends.

Leg Leveler & Toe Kick
Valance System w/Clips
Shipped loose.

FEATURES

Base Cabinets: 9" - 36" W

Tall Cabinets: 84.5" & 94.5"

Wall Cabinets: 10" - 40" H

Full-Depth Wall Cabinets

Tilt-Up & Metal Frame Glass Doors*
*Select Heights

Standard & Wall Hung Vanities

Moldings*
*Not available in all colors.



TEMPO | PET | Matte White

1300

CONSTRUCTION

OVERVIEW

Base Cabinet Height = 34-1/2"
30" case + 4-1/2" leg levelers.

Base Cabinet Depth = 24"

Full-Depth Adjustable Shelves w/Locking Clips

110° Soft-Close Hinges

Drilled-in Door & Drawer Bumpers

Conformat Screw Assembly with
Concealed Hardwood Dowels Joining Tops & Bottoms
Easily replace a damaged component & get the part quickly.

1/8" Reveal Between Doors & Drawers
Once field adjusted (3.175mm).



1300

ATIRA

DRAWER SYSTEM

Double-Wall, White Powder Coated Steel

Full-Extension, Soft-Close Undermount Guides

66 lb. Capacity

5/8" Drawer Bottom

3-7/8" Side-Wall

Tall Drawers Feature Galley Rails





TEMPO

CONTEMPORARY

Flat Panel Door & Drawer Fronts

1mm ABS Banding

Back Matches Front

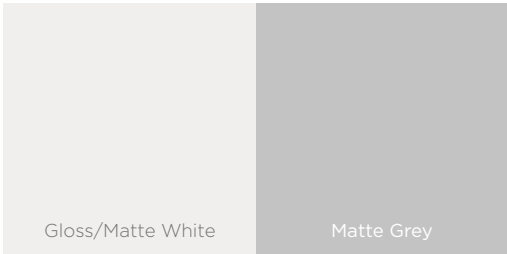
100% Recycle PET Film*

Surface formed under heat and pressure using PET film over a routed MDF panel.

100% Recycled MDF Core

TSCA Title VI Compliant.

*Gloss White is not a 100% recycled product.

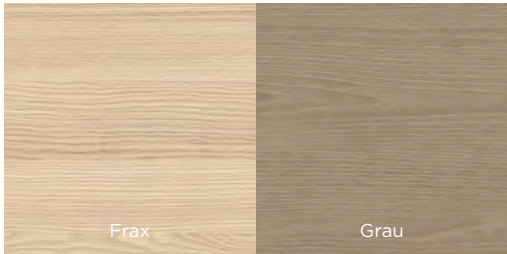




HORIZON

CONTEMPORARY

- Flat Panel Door & Drawer Fronts
- Textured Woodgrain Laminate
- Horizontal Grain Direction
- 1mm Textured ABS Banding
- Back Matches Front
- Industrial Grade Particleboard Core
- TSCA Title VI Compliant.



HORIZON | Textured Laminate | Grau • Metal Frame Doors



FRAME

TRANSITIONAL

Shaker Door Style

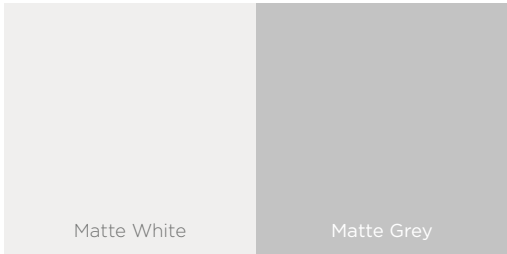
2-1/2" Stile & Rail

Styled Drawer Fronts Taller Than 5"

Matching Laminate on Back

100% Recycle PET Film
Surface formed under heat and pressure
using PET film over a routed MDF panel.

100% Recycled MDF Core
TSCA Title VI Compliant.



FRAME | PET | Matte White & Matte Grey



APEX

TRANSITIONAL

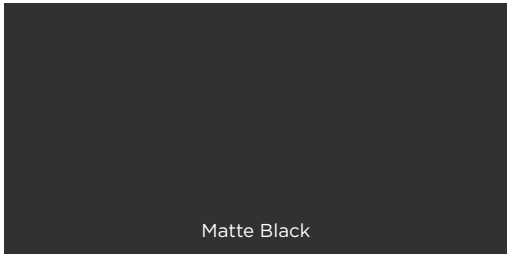
5mm Pencil Edge

Styled Door & Drawer Fronts

Matching Laminate on Back

100% Recycle PET Film
Surface formed under heat and pressure
using PET film over a routed MDF panel.

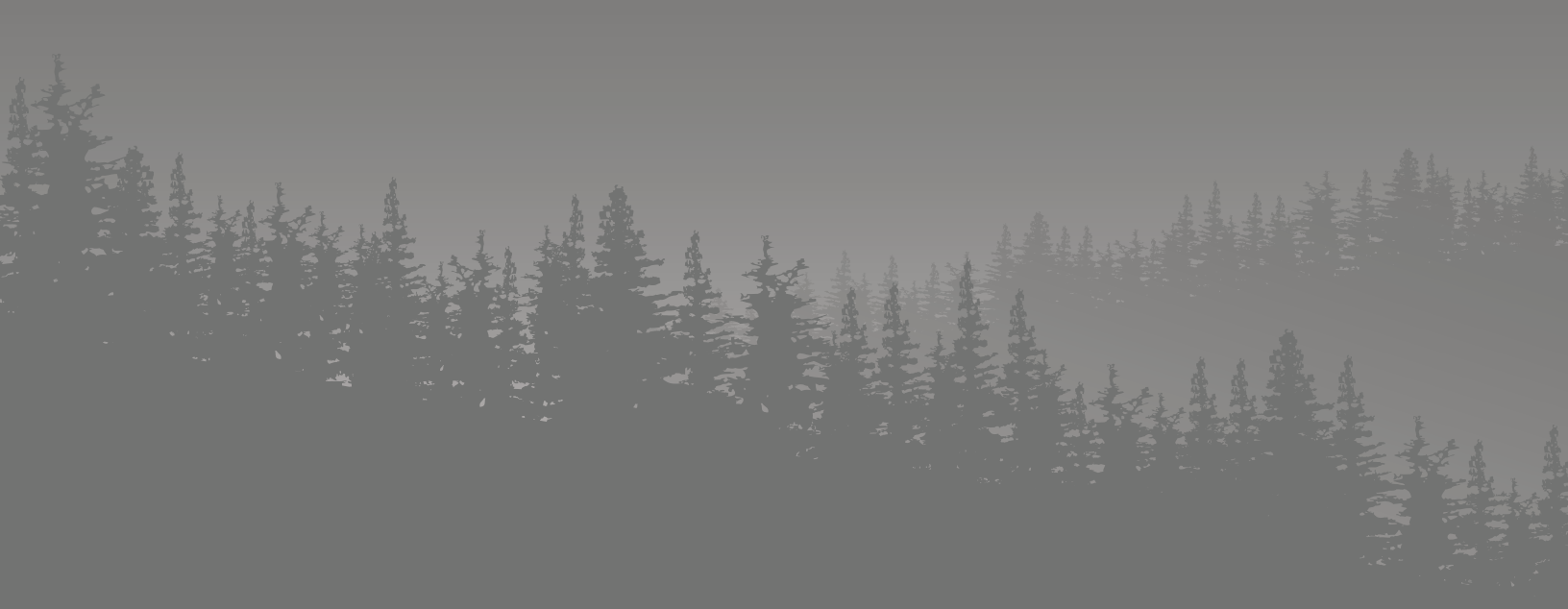
100% Recycled MDF Core
TSCA Title VI Compliant.



Matte Black



APEX | PET | Matte Black



1600

1900

VERO



ENVIRONMENTAL STEWARDS

Bellmont Cabinet Co. has demonstrated an ongoing commitment to environmental responsibility and sustainability for 30 years, and when given the choice, we choose 'GREEN'. Steps like these protect our planet and secure the future for our children.

This is why we're a certified member of the Environmental Stewardship Program (ESP), administered by the Kitchen Cabinet Manufacturers Association (KCMA). Joining this voluntary program supports our commitment to conservation and ensures our compliance in air quality, emissions, sustainable material usage, energy-efficient manufacturing, and waste & recycling management.

Photography and color samples have been reproduced as accurately as possible and are for depiction only. To ensure highest satisfaction, we recommend ordering finished material samples for best color, wood grain, and finish representation when making your selection.

© 8/20 Belmont Cabinet Co.



SERIES COMPARISON

CONSTRUCTION

<div>1300</div> <div>5/8"</div> <div>- 16MM -</div> <div>HALF-DEPTH TOP</div> <div>5/8" Back Panel White Edge Banding</div>	<div>1600</div> <div>5/8"</div> <div>- 16MM -</div> <div>FULL TOP</div> <div>1/4" Back Panel Complimentary Edge Banding</div>	<div>1900</div> <div>3/4"</div> <div>- 19MM -</div> <div>FULL TOP</div> <div>1/4" Back Panel Complimentary Edge Banding Wood Box Banding</div>	<div>VERO</div> <div>3/4"</div> <div>- 19MM -</div> <div>FULL TOP</div> <div>1/4" Back Panel Grey Edge Banding Horizontal & Vertical Rails</div>
---	---	--	--

INTERIORS

<div>1300</div> <div>1600</div> <div>1900</div> <div>WHITE MELAMINE</div>	<div>1600</div> <div>1900</div> <div>MAPLE MELAMINE</div>	<div>1600</div> <div>1900</div> <div>VERO</div> <div>GREY MELAMINE</div>	<div>1600</div> <div>1900</div> <div>PLYWOOD</div>	<div>1900</div> <div>VERO</div> <div>GREY PLYWOOD</div>
---	---	--	--	---

DRAWERS

- Undermount Guides: Adjustable | Full-extension | Soft-close

<div>1300</div> <div>1600</div> <div>1900</div> <div>ATIRA DRAWER</div> <div>1/2" Powder Coated Steel 66lb. Load Capacity</div>	<div>1600</div> <div>1900</div> <div>1/2" HARDWOOD DRAWER</div> <div>Dovetail Joinery 75lb. Load Capacity</div>	<div>1900</div> <div>5/8" PREMIUM MAPLE DRAWER</div> <div>Dovetail Joinery 75lb. Load Capacity</div>	<div>1900</div> <div>VERO</div> <div>LEGRA DRAWER</div> <div>1/2" Powder Coated Steel 88lb. Load Capacity</div>
---	---	--	---

INTERIORS

- White melamine	●	●	●	-
- Grey melamine	-	○	○	○
- Maple melamine	-	○	○	-
- Plywood	-	○	○	-
- Grey plywood	-	-	○	○

DRAWERS

- Undermount Guides: Adjustable | Full-extension | Soft-close

Atira Drawer	●	●	○	-
- 1/2" white, double walled powder coated steel 66lb. load capacity				

Hardwood Drawer	-	●	○	-
- 1/2" hardwood, dovetail joinery 75lb. load capacity				

Premium Maple Drawer	-	-	●	-
- 5/8" Maple, dovetail joinery 75lb. load capacity				

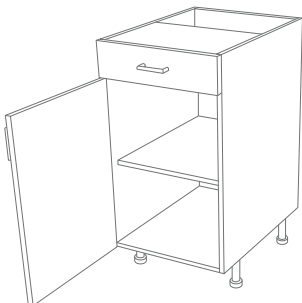
Legra Drawer	-	-	●	●
- 1/2" grey, double walled powder coated steel 88lb. load capacity				

Legra Tip-On	-	-	○	-
- 1/2" grey, double walled powder coated steel 88lb. load capacity				
Handleless, press-to-open				

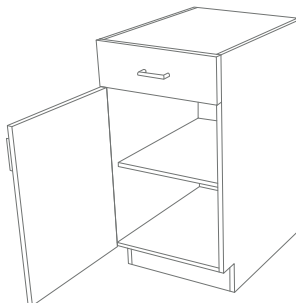
SERIES HIGHLIGHTS

- Limited curation of 8 doors for quick shipping	●	-	-	-
- 110 degree opening, soft-close hinge	●	●	●	●
- Permanent door/drawer bumpers	●	●	●	●
- Full-depth adjustable shelves	●	●	●	●
- Size decrease modifications available	-	1/4"	1/8"	○
- Servo-drive powered, handle-free lift wall cabinet options	-	-	○	○
- "Color Select" Sherwin Williams fan deck paint selections	-	-	○	○
- Integral toe kick	-	●	○	○
- Leg leveler system	●	-	○	○
- Non-standard modifications with "Custom Quote"	-	-	○	-

● = Standard | ○ = Available | - = Not Available

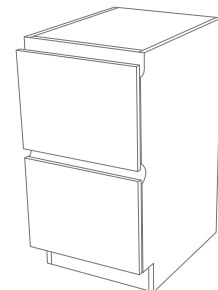


1300



1600

1900



VERO